

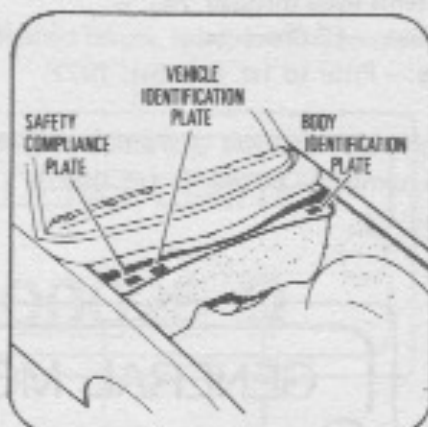
REPLACEMENT PARTS INTERPRETATION:

Plates attached to Passenger Vehicles carry coded information which could be significant in part interpretation.

LOCATION OF IDENTIFICATION PLATES

Plates are attached to the top ledge of the Dash Panel under the Engine Hood, Refer Illustration opposite.

- Safety Compliance Plate
- Vehicle Identification Plate
- Body Identification Plate

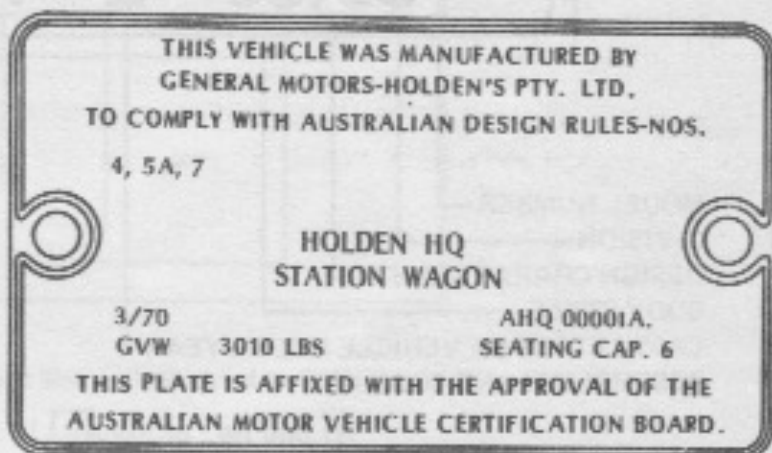


SAFETY COMPLIANCE PLATE

(Not Applicable to Export)

Plate stamped with the following information:—

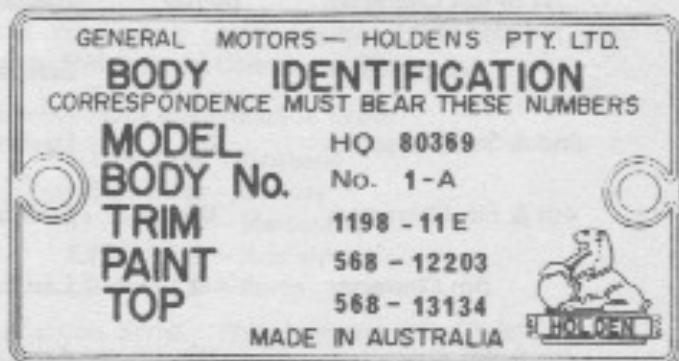
- Australian Design Rule Numbers. (A.D.R.)
- Vehicle Make — Holden
- Vehicle Model Name and Style
- Month and Year of Manufacture
- Vehicle Serial Number
- Seating Capacity of Vehicle
- Gross Vehicle Weight — Commercial Vehicles



BODY IDENTIFICATION PLATE

Plate stamped with the following information:—

- Model:** Combination of Letters & Numbers identifying the Body Model & Style.
- Body No.:** Reference Number followed by Assembly Plant Suffix.
 - A — Adelaide B — Brisbane
 - M — Melbourne S — Sydney
 - NZ — New Zealand
- Trim:** Interior paint colour & Trim combinations. — Catalogue purposes e.g. 11E
- Paint:** Exterior paint basic or Lower colour
- Top:** Exterior paint — Upper Body Section or Roof colour.



VEHICLE IDENTIFICATION NUMBERING SYSTEMS:

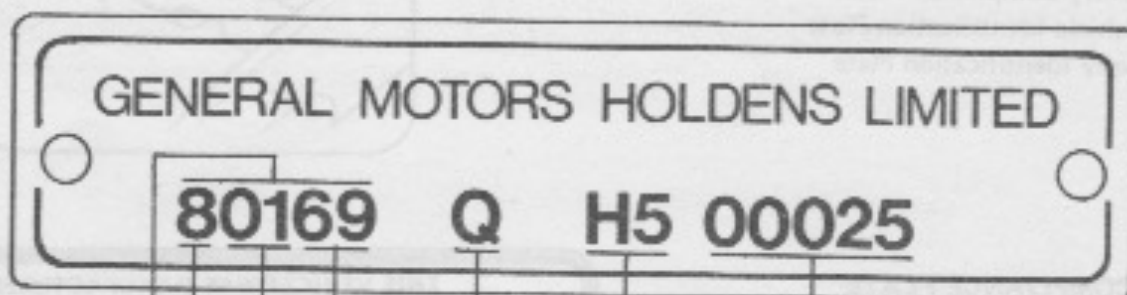
The Vehicle Identification Numbering System (V.I.N.) is based on the uniform Car Model Designation System. The reason for this is to identify the vehicle in one coded series of characters.

Two systems used through 'HQ' -

1st. System - 13 Characters

Effective:- Prior to 1st. October, 1972.

The significance of these characters or blocks of characters is explained below, using as an example identification number - 80169 Q H5 00025



MODEL NUMBER
 DIVISION
 DESIGN CHARACTERISTIC
 BODY STYLE
 LAST LETTER OF VEHICLE MODEL YEAR
 ASSEMBLY PLANT CODE:-

H1 thru H4 : Brisbane
 H5 thru H9 : Sydney
 J1 thru J9 : Melbourne
 L1 thru L5 : Adelaide
 L6 thru L9 : Perth

SERIAL (SEQUENCE) NUMBER

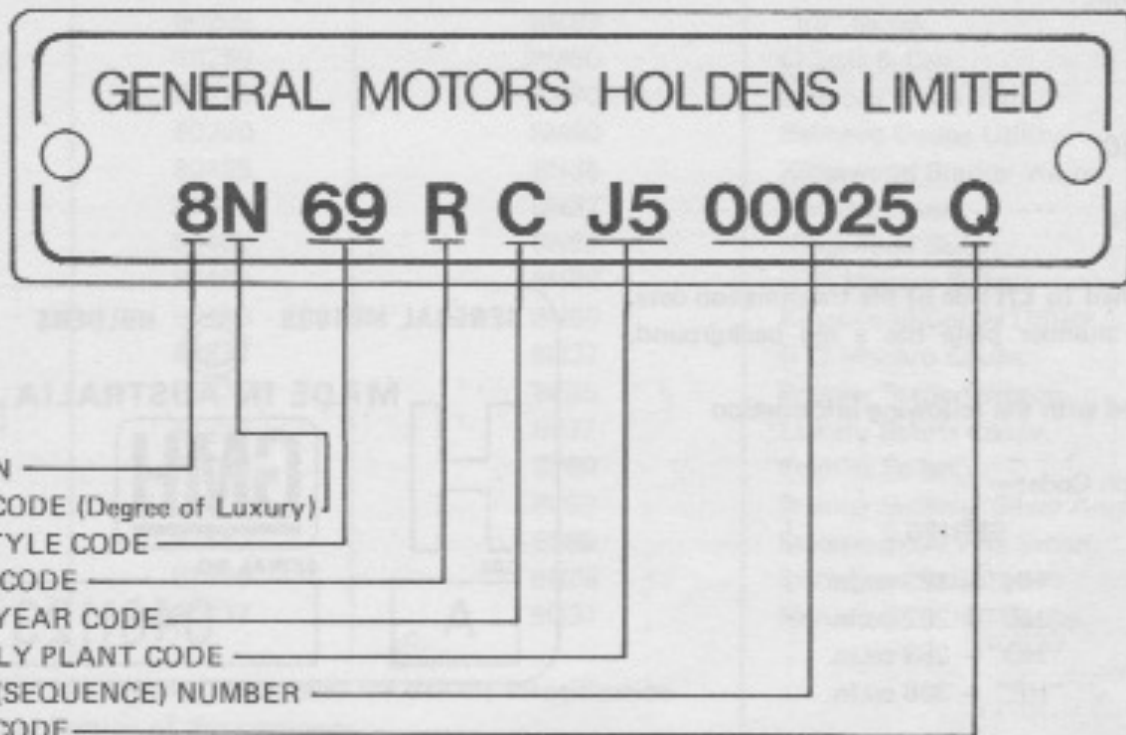
1st to 5th Character	80169	Designates the Model, (Refer Model Designation Page).
1st Character	8	Standard Numeral allocated to GMH Limited.
2nd & 3rd Characters	01	Design Characteristic.
4th & 5th Characters	69	Standard Body Style Identification.
6th Character	Q	Last Letter of Vehicle Model Year in Letter Form.
7th & 8th Characters	H5	Australian Assembly Plant Identification Code.
9th to 13th Characters	00025	Sequence Number in which the Vehicle was built at the Plant concerned.

VEHICLE IDENTIFICATION NUMBERING SYSTEM (Cont'd.)

2nd (Revised) System – 14 Characters

Effective:— From 1st. October, 1972.

The significance of these characters or blocks of characters is explained below, using as an example identification number 8 N 69 R C J5 00025 Q.



1st Character	8	Standard Numeral allocated to GMH Limited.
2nd Character	N	Degree of Luxury:— M – Balmont, Chassis & Cab N – Kingswood, Monaro P – Premier, Monaro LS Q – Monaro GTS R – Statesman S – Statesman De Ville
3rd & 4th Characters	69	Standard Body Style Identification.
5th Character	R	Engine Identification Code. (Refer Engine Identification).
6th Character	C	Identifies Model Year. This Letter changes 1st September each year and relates to GM Internal Operations Only.
7th & 8th Characters	J5	Australian Assembly Plant Identification Code:— H1 thru H4 – Brisbane H5 thru H9 – Sydney J1 thru J9 – Melbourne L1 thru L5 – Adelaide L6 thru L9 – Perth
9th to 13th Character	00025	Sequential Production Serial. This designates the Serial Unit Number at each Vehicle Assembly Plant, starting at (0001); and to continue in Numerical Sequence regardless of vehicle type.
14th Character	Q	GMH Limited Model Code Designation for each Model Programme.

REPLACEMENT PARTS INTERPRETATION (Cont'd.)

TRANSMISSION SERIAL NUMBER PLATES

Plates attached to Automatic Transmission carry coded information which could be significant in parts interpretation.

"TRIMATIC"

LOCATION:

Plate attached to LH side of the transmission case. The serial number plate has a red background.

Plate stamped with the following information

Transmission Code:--

SERIES 2

- "HN" - 173 cu.in.
- "HT" - 202 cu.in.
- "HO" - 253 cu.in.
- "HP" - 308 cu.in.

Valve body Calibration Code: "A"

Serial Number



TURBO HYDRAMATIC 400

LOCATION:

Plate attached to RH side of the transmission case forward of the governor.

Plate stamped with the following information

Transmission Code:-- "EH" - 308 cu.in. Eng.

Year of manufacture '71.

Serial Number: 1128



MODEL DESIGNATION CHART

*1st. V.I.N. CODE ENGINE		2nd (Rev.) V.I.N. CODE	MODEL DESCRIPTION
L-6	V-8		
80135	80235	8M35	Belmont Station Wagon
80169	80269	8M69	Belmont Sedan
	80269	8M69	"SS" Sedan.
80160	80260	8M60	Chassis & Cab.
80170	80270	8M70	Belmont Panel Van.
80180	80280	8M80	Belmont Coupe Utility.
80335	80435	8N35	Kingswood Station Wagon.
80337	80437	8N37	Monaro Coupe.
80369	80469	8N69	Kingswood Sedan.
	80469	8N69	GTS Monaro Sedan.
80380	80480	8N80	Kingswood Coupe Utility.
	80837	8Q37	GTS Monaro Coupe.
81135	81235	8P35	Premier Station Wagon.
81137	81237	8P37	Luxury Sports Coupe.
81169	81269	8P69	Premier Sedan.
81169		8P69	Premier Sedan - Silver Anniversary.
	81469	8S69	Statesman De Ville Sedan.
81569	81669	8R69	Statesman Sedan.
	81837	8Q37	Monaro GTS 350 Coupe.

* Original (1st.) V.I.N. Column Codes used for Vehicle Identification within the Body Section of this catalogue.

ENGINE SERIAL NUMBER STAMPING LOCATION

L6 - On Pad above Engine Mounting Bosses RH side of Engine.

V8 - 253 & 308 cu.in. - On Pad at top front LH side of Cylinder Case.

V8 - 350 cu.in. - On Pad RH side top surface of Cylinder Case front of Cylinder Head.

ENGINE IDENTIFICATION and SPECIFICATIONS

ENGINE	TYPE	BORE	STROKE	COMP. RATIO	ENGINE NO. PREFIX	IDENT. CODE
173 cu.ins.	L6	3.50"	3.00"	8.3 : 1	OE	E
173 cu.ins.	L6	3.50"	3.00"	9.4 : 1	QD	D
202 cu.ins.	L6	3.62"	3.25"	7.8 : 1	QM	M
202 cu.ins.	L6	3.62"	3.25"	9.4 : 1	QL	L
253 cu.ins.	V8	3.62"	3.06"	8.0 : 1	QS	S
253 cu.ins.	V8	3.62"	3.06"	9.0 : 1	QR	R
308 cu.ins.	V8	4.00"	3.06"	9.0 : 1	QT	T
350 cu.ins.	V8	4.00"	3.48"	8.5 : 1	QU	U

Note:- Statesman Engines carry an additional Prefix of "11" preceding the Alphabetical Prefix.;